

COMPANY PROFILE

2020




IPSDecor Furniture Trading

"When you think of space saver
think of IPSDecor Operable Walls"

IPSDECOR FURNITURE TRADING

 *Office Address:* Phase E1 Block-8 Lot-5, Brgy. Mulawin, Francisco Homes, City of San Jose del Monte, Bulacan

Manufacturing Plant Address: National Highway, Poblacion 1, City of San Jose del Monte, Bulacan

 0923-373-2916 / 0966-140-0498 / 0917-116-3376

 ipsdecor.furnituretrading@gmail.com

 <https://www.facebook.com/ipsdecor.furnituretrading>



BACKGROUND

IPSDecor owner, Mr. Semy Obias, has been in the industry for more than 30 years. Having mastered operable systems and catered projects from farther North to the South. Having its own manufacturing plant located in Bulacan enables the company to easily adjust to its clients demand and lead time requirements.

IPSDecor takes pride not only in providing quality products but also in giving its clients its life and committed to be of service to them.



PRODUCTS & SERVICES

- **IPS Operable Walls Series 100**

PANEL THICKNESS	100-mm thick
PANEL FRAME	Aluminum Profile 100 mm x 1.5 mm in powder coated / satin finish
PANEL CONSTRUCTION	1200mm maximum width; 60mm minimum width aluminum tracks
INSULATION	Rockwool insulation, 60 kg/m ³
RAIL TRACK	H 80 mm x W 76 mm x 4.5 mm Thick
ROLLER ASSEMBLY	Glider type roller assembly or 4-wheeled type assembly
FOOT BOLT	Stainless foot bolt for panel stability
END PANEL CLOSURE	Rotatable panel or Telescopic Element Panel
PANEL SURFACE	Laminated / Fabric Finish / Varnished Finish
STC RATING	48 db
WARRANTY	3-year warranty on mechanism and rollers only

- **IPS Operable Walls Series 60**

PANEL THICKNESS	100-mm thick
PANEL FRAME	Aluminum Profile 100 mm x 1.5 mm in powder coated / satin finish
PANEL CONSTRUCTION	1200mm maximum width; 60mm minimum width aluminum tracks
INSULATION	Rockwool insulation, 60 kg/m ³
RAIL TRACK	H 80 mm x W 76 mm x 4.5 mm Thick
ROLLER ASSEMBLY	Glider type roller assembly or 4-wheeled type assembly
FOOT BOLT	Stainless foot bolt for panel stability
END PANEL CLOSURE	Rotatable panel or Telescopic Element Panel
PANEL SURFACE	Laminated / Fabric Finish / Varnished Finish
STC RATING	25 db
WARRANTY	3-year warranty on mechanism and rollers only

- **IPS Operable Glass Partitions**

- **IPS Toilet Partitions**

- ✓ 12-mm thick phenolic compact board
- ✓ Black Nylon/Stainless hinges, cloth hook, handle, indicator lok, and footings

- **IPS Office Partitions**
- **IPS Office Furnitures**
- **IPS Combi Blinds**
- **IPS Roll Up Blinds**
- **IPS Glass & Aluminum**
- **IPS Accordion Folding Door PVC & Wooden**



CLIENTS

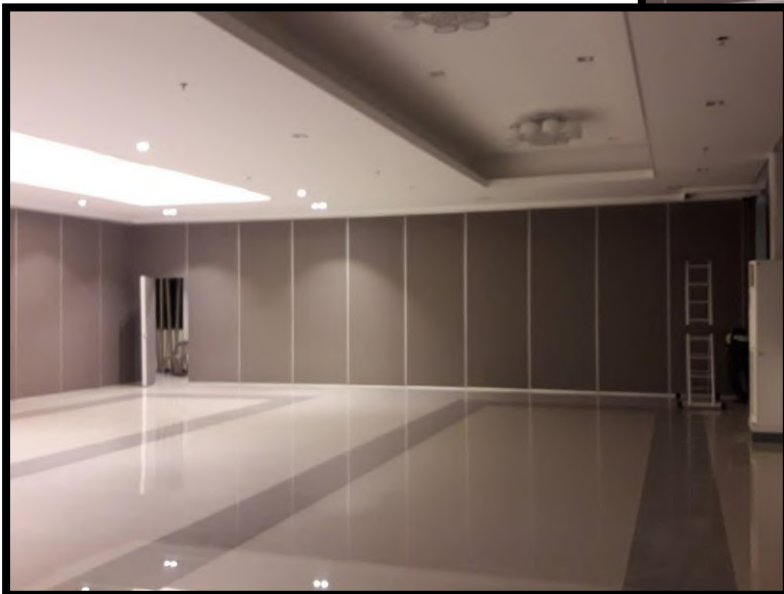
1. **Accuracy Builders Enterprise / New TBP Construction and Development, Corp.**
 - *College of Home Economics Complex Building* – UP Diliman, Quezon City
 - *College of Fine Arts Complex Building* – UP Diliman, Quezon City
 - *School of Law and Industrial Relations (SOLAIR)* – UP Diliman, Quezon City
2. **Metro Rei Property Ventures, Inc.**
 - *Business Park* – Ibaan, Batangas – 3 sets H 3.50 x 23.0m c/o Arch. Sheilah Nuyles
3. **TG & OGR Corporation**
 - *McArthur Highway, Tarlac City*
4. **Jonzlibz Building System**
 - *Mati City, Davao Oriental* – 1 set H 5.0m x 35.0m
 - *Villa Nida, Toril, Davao City* - 1 set H 4.0m x 15.0m
 - *El Salvador , Cagayan De Oro* - 1 set H 2.50m x 10.0m
 - *Marbel, South Cotabato* - 1 set H 2.5m x 8.60m
 - *Agriculture Technology Institute (ATI), Quezon City* c/o Engr. Maulit
5. **Western Union**
 - *USSC Building, Cubao, Quezon City*
6. **DPWH Region IV-A**
 - *EDSA, Quezon City*
7. **Inspec Consolidated Construction, Inc.**
 - *PLDT-Iloilo City*
8. **RD Manlangit Builders and Trading**
 - *Aguinaldo Memorial Gardens, Capas, Tarlac*
9. **Sta. Lucia Land, Inc.**
 - *BPO Office Sta. Lucia East Grand Mall, Felix Ave., Cainta, Rizal*
10. **First Orient Development and Construction Corp.**
 - *UNILAB S-UMMO Warehouse, Mamlasan, Biñan, Laguna*
11. **Jollibee Food Corp.**
 - *Jollibee- Pritil, Unit F and G Pajuso Bldg., Tayuman St. cor. Juan Luna St., Tondo, Manila*
12. **City Savings Bank, Inc.**
 - *29th Flr. UnionBank Plaza Building, Meralco Avenue corner, Onyx Rd, Ortigas Center, Pasig City*



PROJECT 1

NEW TBP CONSTRUCTION

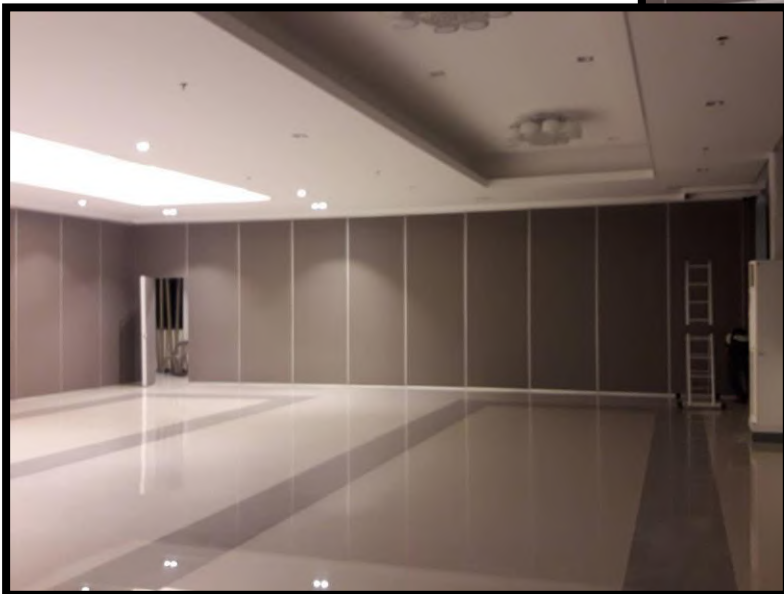
*University of the Philippines- Diliman,
Quezon City*





PROJECT 2

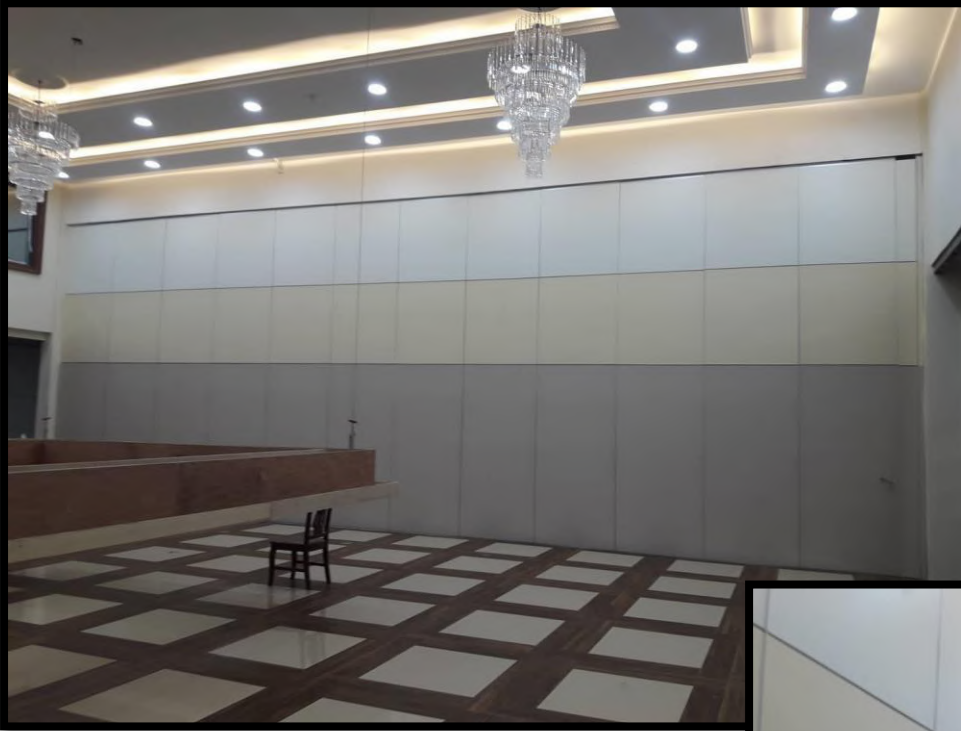
METRO REI – BUSINESS PARK
Ibaan, Batangas





PROJECT 3

TG & OGR CORPORATION
McArthur Highway, Tarlac City





PROJECT 4

JONZLIBZ BUILDING SYSTEM
Mati City, Davao Oriental





PROJECT 5

WESTERN UNION HEAD OFFICE
USSC Building, Cubao, Quezon City





PROJECT 6

DPWH – REGION 4A OFFICE (Series 60)
EDSA, QUEZON CITY

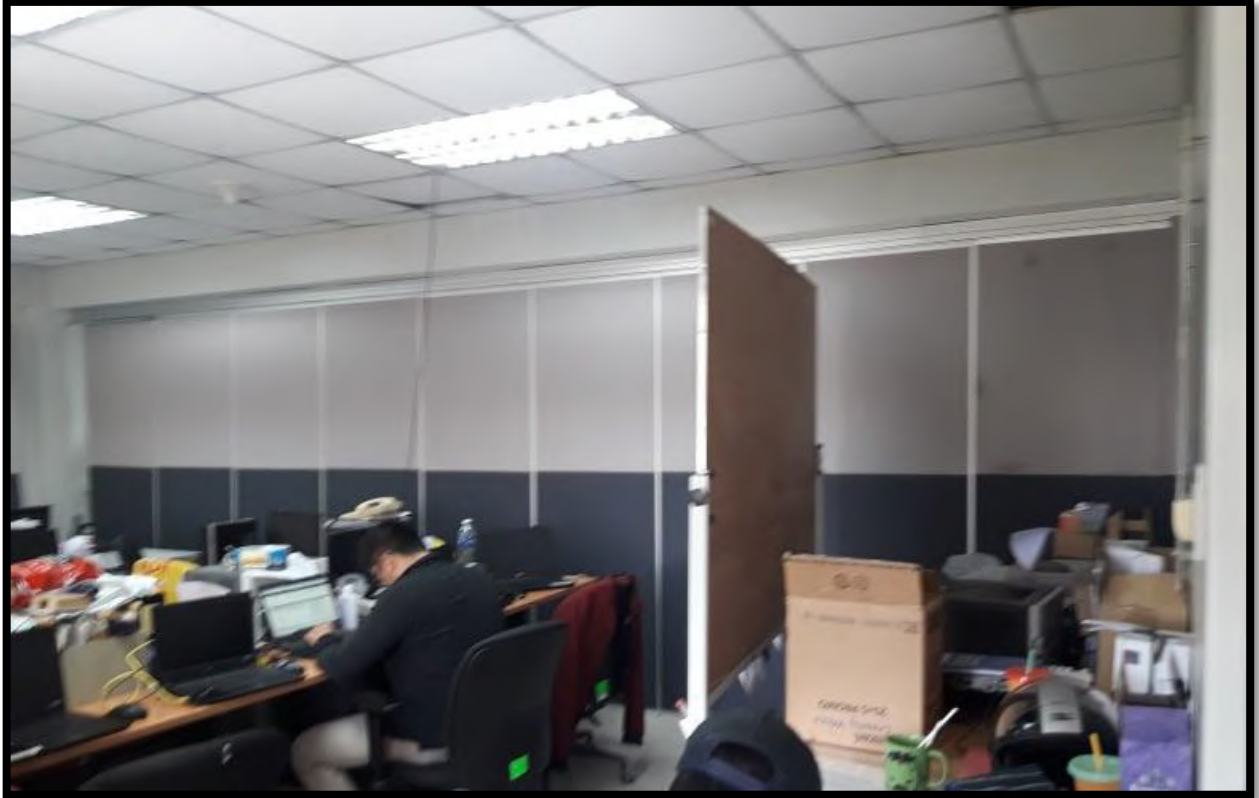




PROJECT 7

INSPEC CONSOLIDATED CONSTRUCTION

PLDT- Iloilo City





PROJECT 8

RD MANLANGIT BUILDERS AND TRADING

Aguinaldo Memorial Gardens, Capas, Tarlac





PROJECT 8

RD MANLANGIT BUILDERS AND TRADING

Aguinaldo Memorial Gardens, Capas, Tarlac





PROJECT 9

STA. LUCIA LAND, INC.

BPO Office, Sta. Lucia East Grand Mall, Marcos Highway, Cainta, Rizal

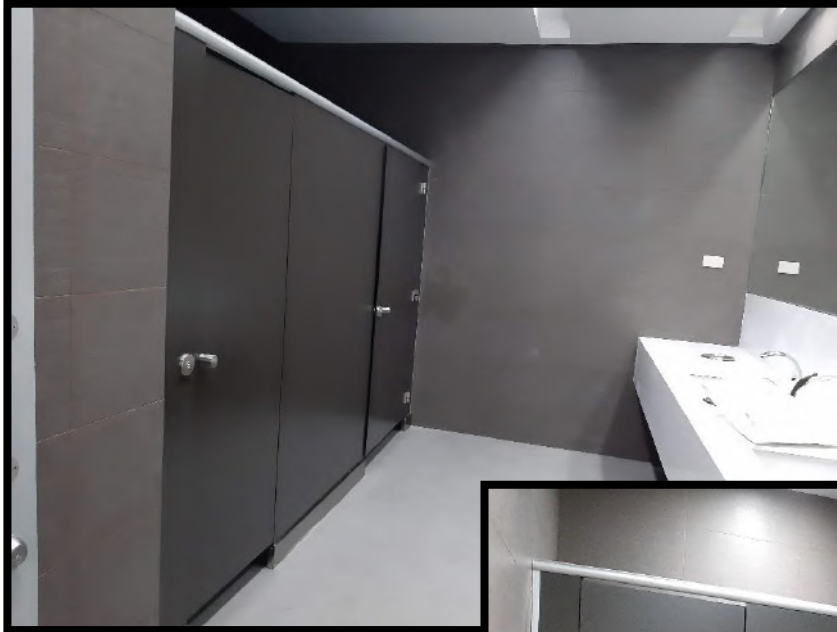




PROJECT 10

FIRST ORIENT DEVELOPMENT AND CONSTRUCTION CORP.

UNILAB S-UMMO Warehouse, Mamplasan, Laguna





PROJECT 10

FIRST ORIENT DEVELOPMENT AND CONSTRUCTION CORP.

UNILAB S-UMMO Warehouse, Mamplasan, Laguna



